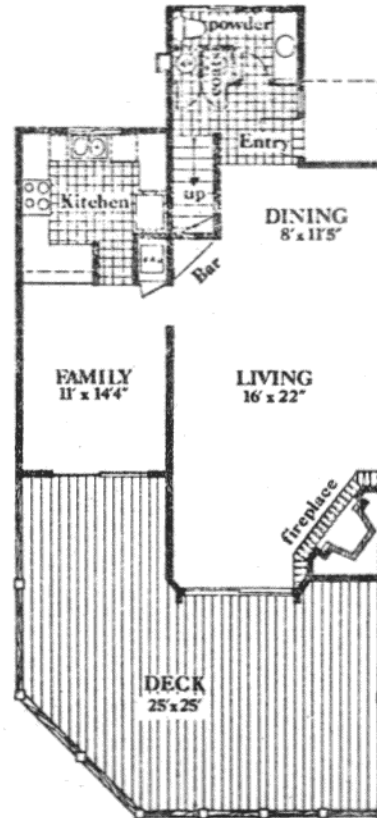
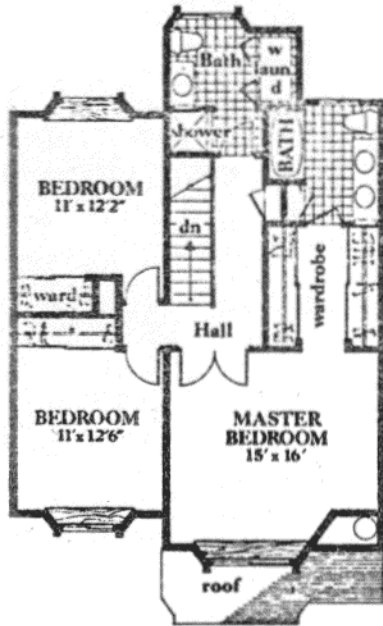


## Hudson's Bay—C



3 bedrooms. 2½ baths.

An unusually large 16' x 22' living room is but one of the outstanding features of this floorplan. The room is accented by a large fireplace, canted for maximum effect. The room also has a handy bar which is adjacent to the dining area. The lower level entry way contains a convenient powder room and guest closet. The family room is adjacent to the kitchen. Both the family room and the living room open to a large deck area. The second floor contains a large master bedroom walk-through wardrobe closet, vanity area and bath. The second bath has been handily selected as the location of the washer-dryer, laundry room. The second and third bedrooms complete this plan.

1827.6 square feet

Note: An optional feature is available in Units 2 and 3. The wall between the master bedroom and the second bedroom may be opened, thus creating a sitting room or retreat as part of the master bedroom suite.