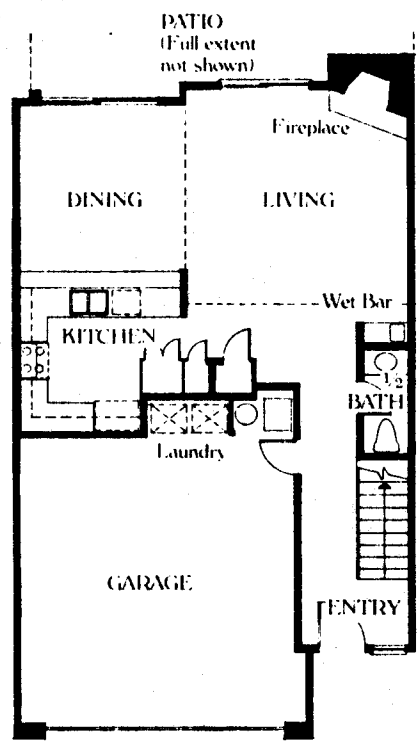
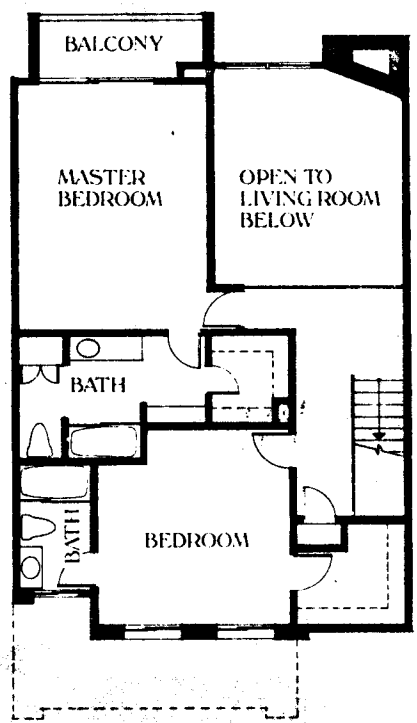


THE ELMWOOD



Unit E/townhouse
 Approx. 1561 sq. ft.
 2 bedrooms, 2½ baths.

Ground floor.



Second floor.

- Decorative lighting fixtures • Large linen closets
- Individual forced air heating and air-conditioning units
- Individual water heaters • Individual fire detection systems
- Dead-bolt locks • Pre-wired for television and telephone
- Electric garage door opener.

INTERIOR TOWNHOUSES

Formal entryway • Walk-in closets with treated doors (mirrored in master bedroom) • High sloped ceilings in living rooms.

DELUXE KITCHENS

Wood framed luminous ceilings • Ceramic tile countertops • Stained wood cabinets • Ample pantry • Eye-level Gaffers & Sattler gas ranges with see-through doors and integral charcoal filter hoods • Heavy duty garbage disposal • Gaffers & Sattler dishwasher.

BATHROOMS

Cultured marble countertops • Large plate glass mirrors • Medicine cabinets • Tub/shower enclosures • Dressing lights.

TW 368A - IV