



Fontainebleau

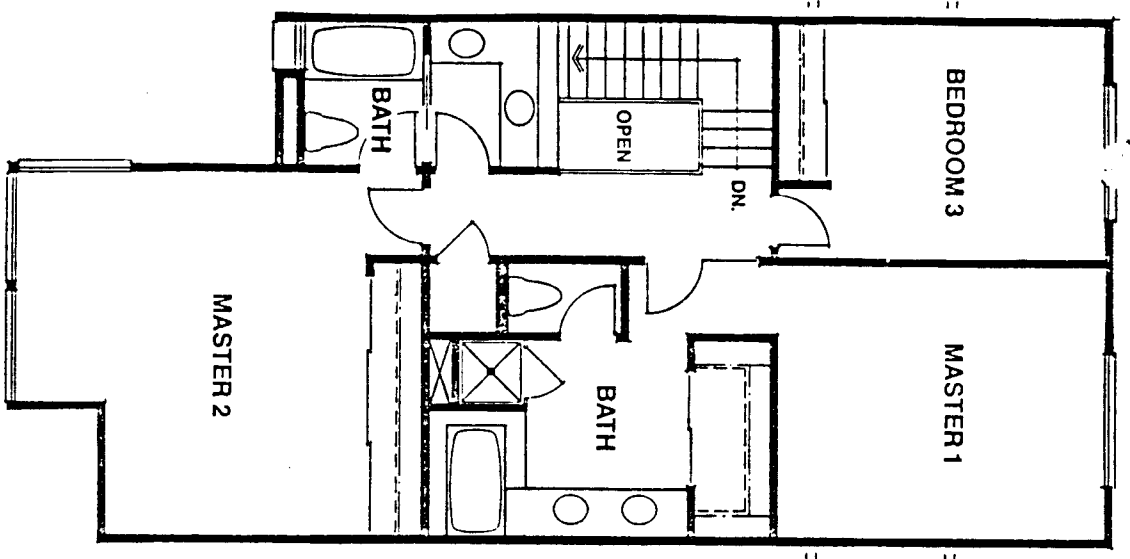
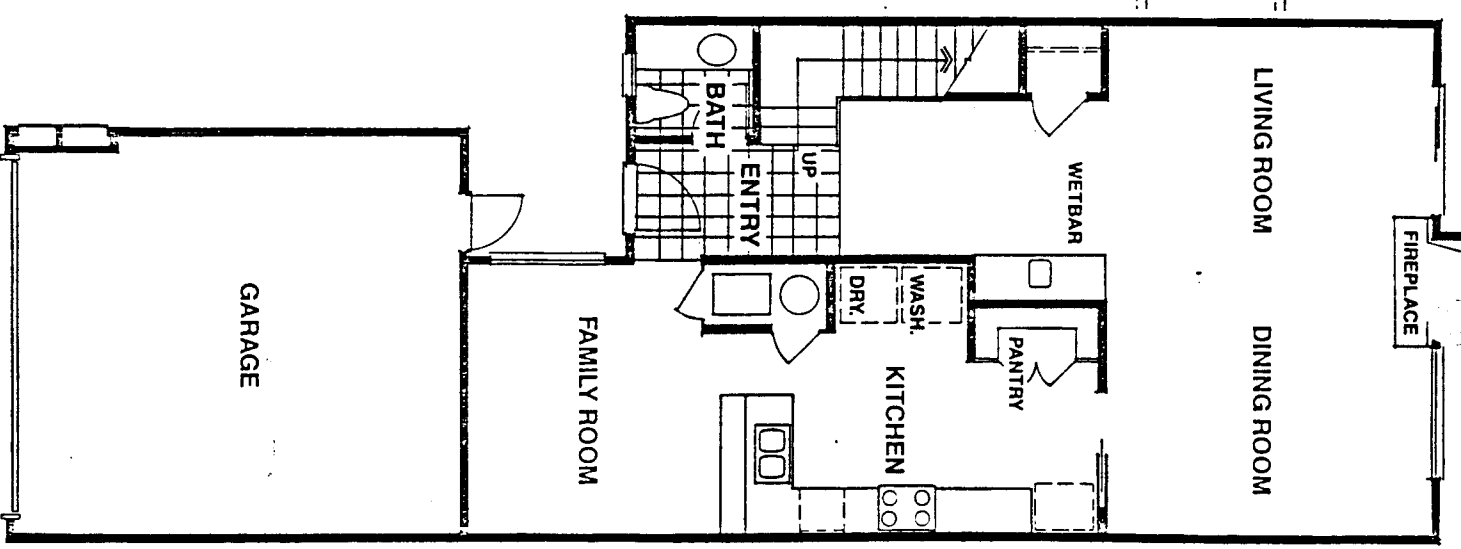
PLAN 1930

The emphasis is on family living and opportunities for gracious, Old World entertaining in this outstanding example of Dale Poe quality and innovation. Note the atrium which dominates the entryway and the huge living room-dining room combination, tied together by the warmth of a woodburning fireplace. There's a wet bar, of course, and a large, well-appointed gourmet kitchen which opens on to a spacious family room. And that is only the beginning.

Upstairs, two complete master suites, third bedroom and two complete baths. Loads of closet and storage space, too, for larger families.

Here is a home of quality deserving of your close and thoughtful inspection.

Another Community of Timeless Quality
by Dale Poe Development Corp.



TRAC # 812 - phase 2

AG 9H