



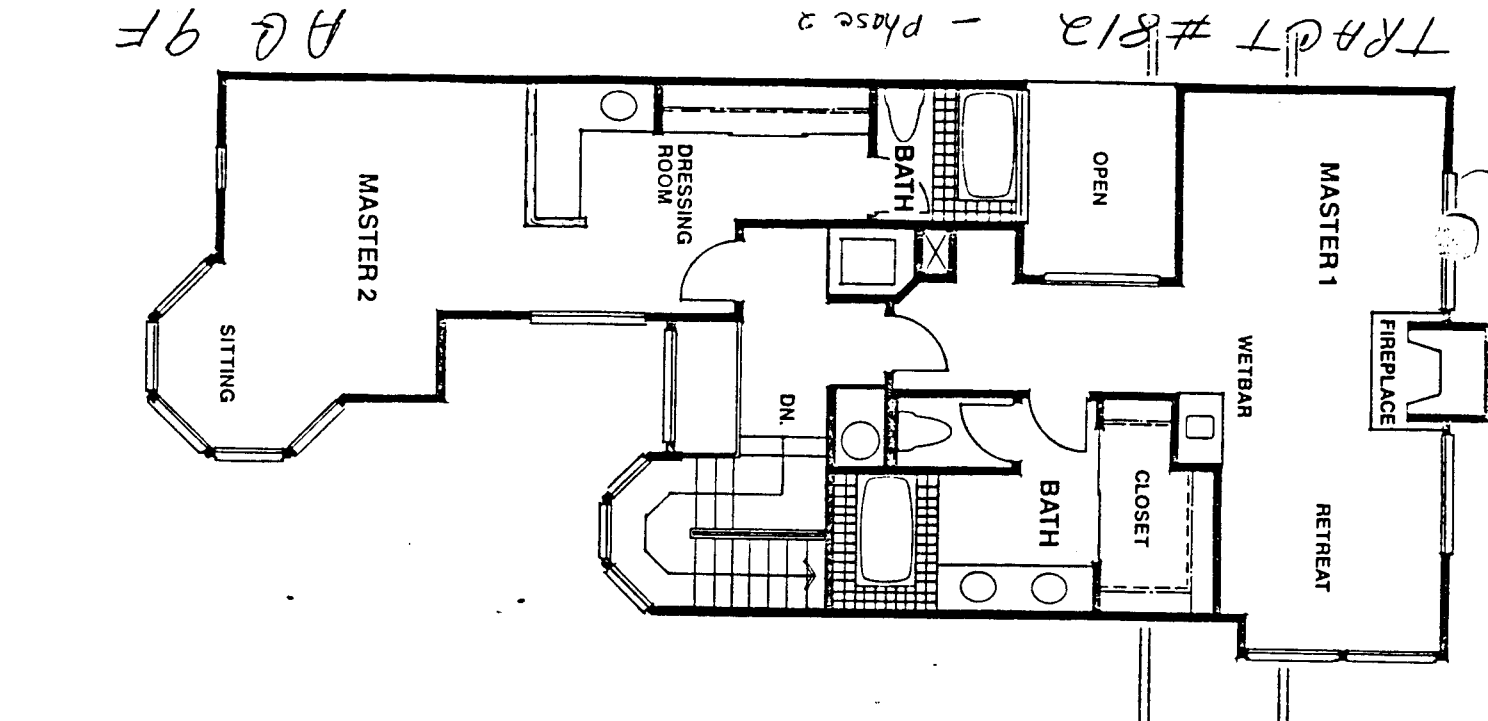
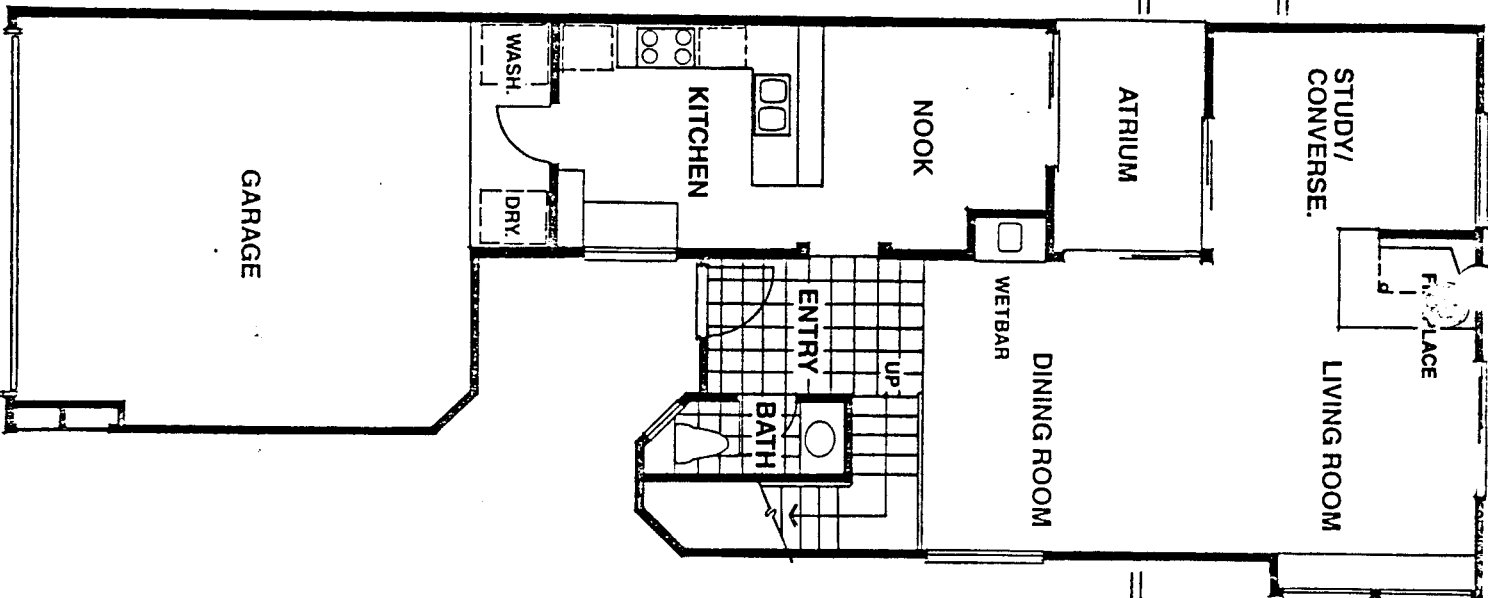
Riviera

PLAN 1850

If you think this is an elegant reproduction of French Provincial style when you see the downstairs with its open-to-the-roof entryway, sun drenched atrium and the stylishly designed living room-study combination, and its kitchen, with family breakfast nook, wait until you mount the winding stairs.

Not one, but two, magnificently appointed master suites; one with its own fireplace and wet bar, plus a cozy sitting area; the other, almost equally large with a separate dressing area. Both have their own complete baths, of course.

This spacious masterpiece must be seen to be fully appreciated. It's typical of the timeless quality you expect from Dale Poe.



TRAPT #812 - Phase 2

AG 9F